

Notice of Development Review

The Columbia River Gorge Commission is seeking comment on the following development review application:

FILE NUMBER:	C24-0009
PROPOSAL:	The Columbia River Gorge Commission has received an application for a replacement single-family dwelling with an attached garage and associated utilities.
APPLICANTS:	Ron & Carol Kroeskop, Dave Sauter
LANDOWNERS:	Ron & Carol Kroeskop
SIZE and LOCATION:	The subject property is located at 323 Old Highway 8, and is described as Tax Lot Number 03-12-2900-000/600 in the western half of Section 29, Township 3 North, Range 12 East, Willamette Meridian, Klickitat County, Washington. The property is located on a parcel that is approximately 80 acres in size and is associated with these additional Tax Lot Numbers: 03-12-2900-001/700 and 03-12-2900-001/800.
LAND USE DESIGNATION:	General Management Area (GMA) – Small-Scale Agriculture (80)
NOTICE DATE:	December 17, 2024
COMMENT DEADLINE:	January 7, 2025

The application and supporting documents are available for review Monday through Thursday from 8:00 a.m. to 5:00 p.m. at the Gorge Commission office at 57 NE Wauna Avenue, White Salmon, Washington. The application and supporting documents are also available on the Gorge Commission's website at <http://www.gorgecommission.org/land-use/pending-applications/>.

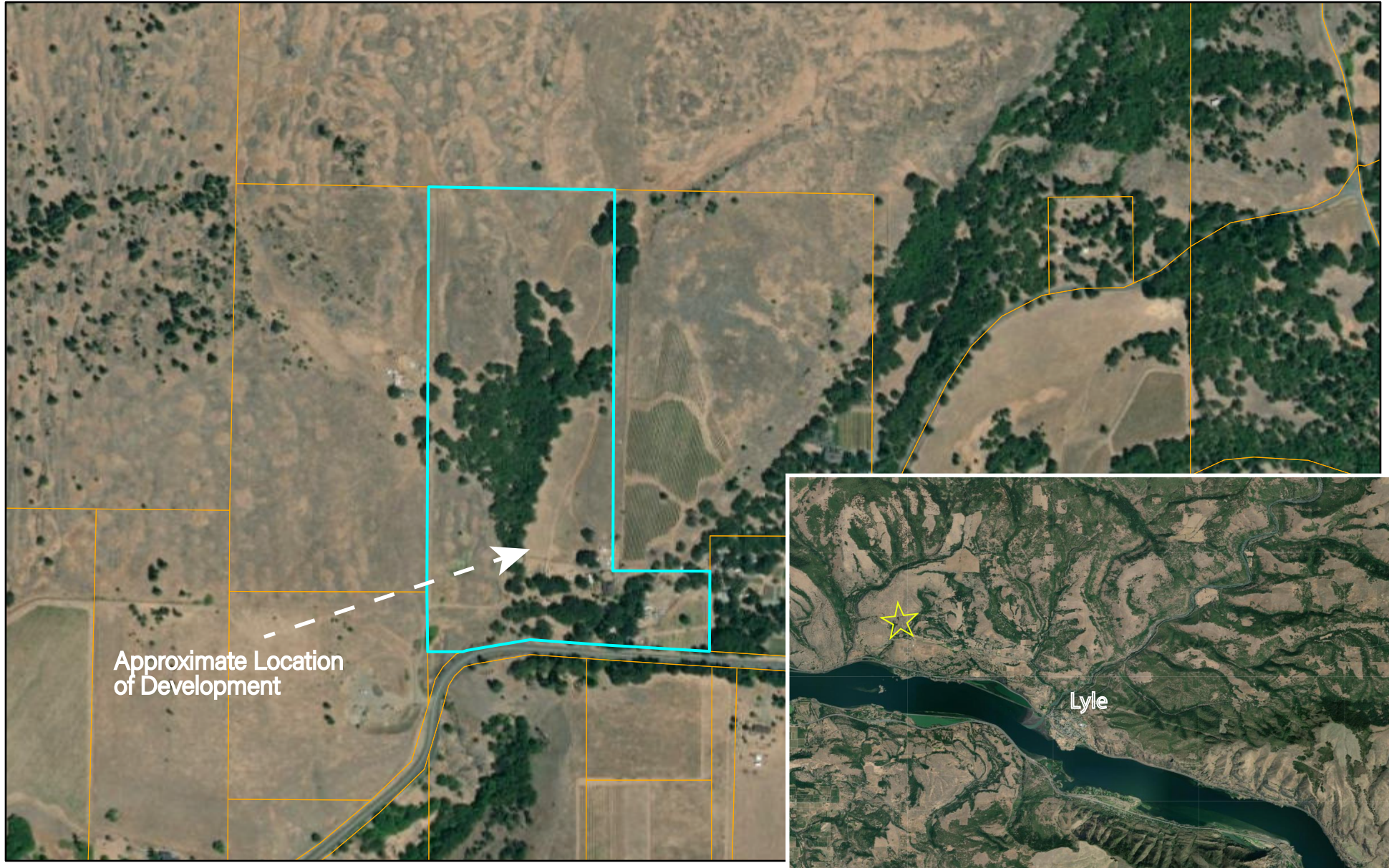
This application will be reviewed for consistency with the Columbia River Gorge Commission's Land Use Ordinance (Commission Rule 350-082). The Gorge Commission may consider comments about consistency with *Management Plan for the Columbia River Gorge National Scenic Area* and the Columbia River Gorge National Scenic Area Act, 16 U.S.C. §§ 544 - 544p. Copies of these authorities are available on the Gorge Commission's website at <http://www.gorgecommission.org/about-crgc/legal-authorities/>.

Comments may be mailed to the Gorge Commission office at P.O. Box 730, White Salmon, WA 98672 or emailed to info@gorgecommission.org. All comments received are public records and will be provided to persons who request a copy in accordance with the Gorge Commission's rule governing public records (Commission Rule 350-12).

Consistency with the National Scenic Area Act does not imply or ensure compliance with any other applicable local, state, or federal law.

If you have any questions, please contact Mackenzie Aamodt at (509) 281-9383 or by email at mackenzie.aamodt@gorgecommission.org.

C24-0009 Kroeskop



Approximate Location
of Development

Kroeskop
323 Old Hwy 8, Lyle, WA 98635
Section 29, T3N, R12E, W.M.
Tax Lot: 03-12-2900-000/600

 Taxlots

Maxar

