



Notice of Development Review

The Columbia River Gorge Commission is seeking comment on the following development review application:

| | |
|------------------------------|---------------------------------------------------------------------------------------------------------------------------------------------------------------------------------------------------------------------------------------------------------------------|
| FILE NUMBER: | C24-0005 |
| PROPOSAL: | The Columbia River Gorge Commission has received an application for a new fruit and produce stand. |
| APPLICANT: | Mary Kleihege |
| LANDOWNER: | Mary Kliehege |
| SIZE and LOCATION: | The subject parcel is approximately 214 acres in size and located at 386 Lyle Snowden Road and described as tax lot number 03-12-0900-0001/00 in the eastern half of Section 9, Township 3 North, Range 12 East, Willamette Meridian, Klickitat County, Washington. |
| LAND USE DESIGNATION: | General Management Area (GMA) – Large -Scale Agriculture (160) |
| NOTICE DATE: | May 23, 2024 |
| COMMENT DEADLINE: | June 13, 2024 |

The application and supporting documents are available for review Monday through Thursday from 8:00 a.m. to 5:00 p.m. at the Gorge Commission office at 57 NE Wauna Avenue, White Salmon, Washington. The application and supporting documents are also available on the Gorge Commission’s website at <http://www.gorgecommission.org/land-use/pending-applications/>.

This application will be reviewed for consistency with the Columbia River Gorge Commission’s Land Use Ordinance (Commission Rule 350-082). The Gorge Commission may consider comments about consistency with *Management Plan for the Columbia River Gorge National Scenic Area* and the Columbia River Gorge National Scenic Area Act, 16 U.S.C. §§ 544 - 544p. Copies of these authorities are available on the Gorge Commission’s website at <http://www.gorgecommission.org/about-crgc/legal-authorities/>.

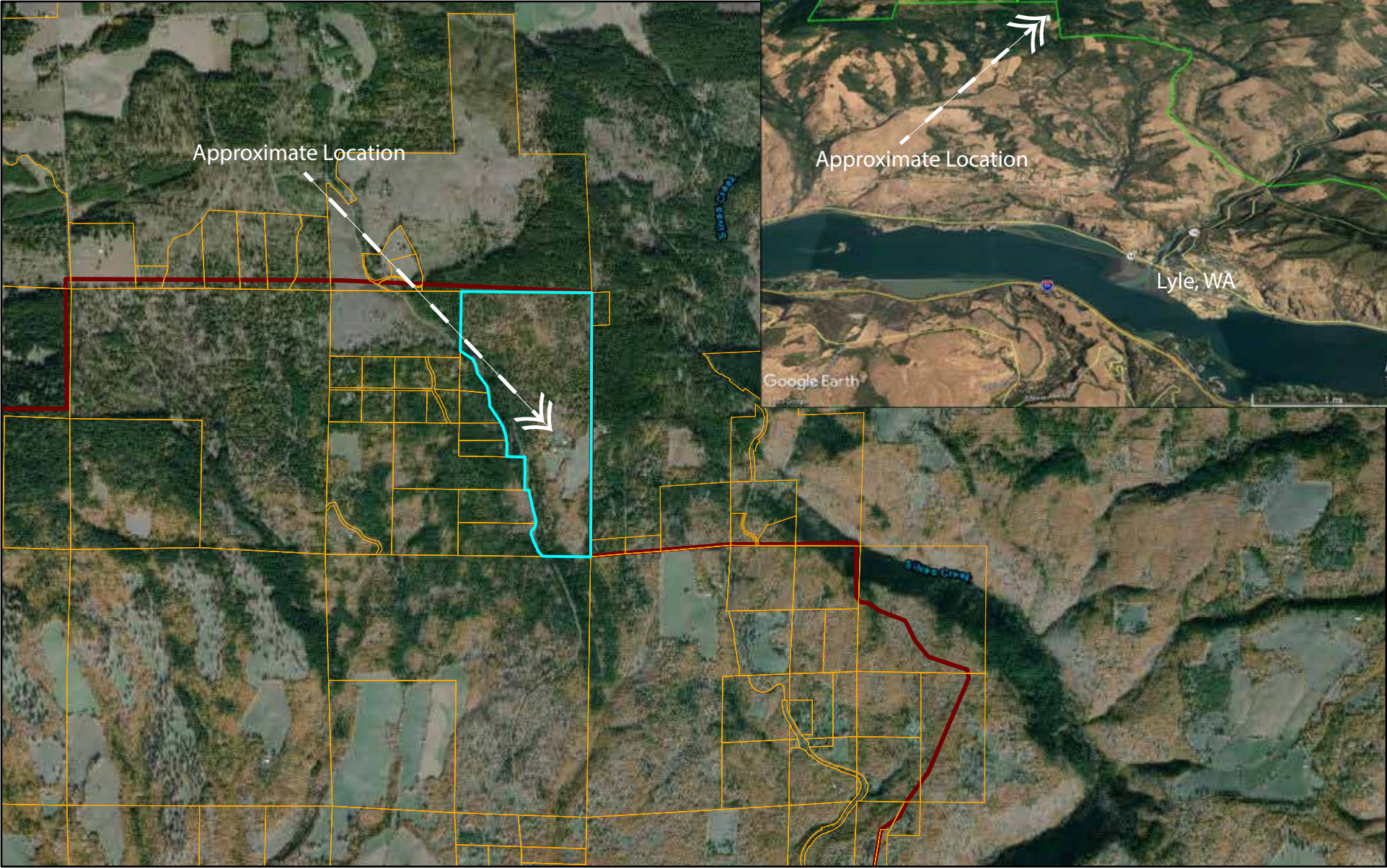
Comments may be mailed to the Gorge Commission office at P.O. Box 730, White Salmon, WA 98672 or emailed to info@gorgecommission.org. All comments received are public

records and will be provided to people who request a copy in accordance with the Gorge Commission's rule governing public records (Commission Rule 350-12).

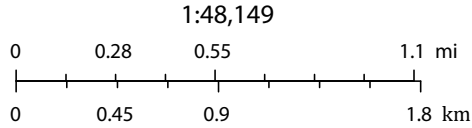
Consistency with the National Scenic Area Act does not imply or ensure compliance with any other applicable local, state, or federal law.

If you have any questions, please contact Bryce Guske at (509) 713-9622 or by email at bryce.guske@gorgecommission.org.

C24-0005 Kleihege



Mary Kleihege
386 Lyle-Snowden Rd
TL: 03-12-0900-0001/00
Section 9, T3N, R11E, W.M.



Source: Esri, Maxar, GeoEye, Earthstar Geographics, CNES/Airbus DS,

Columbia River Gorge Commission